

1

VIDEO WALL

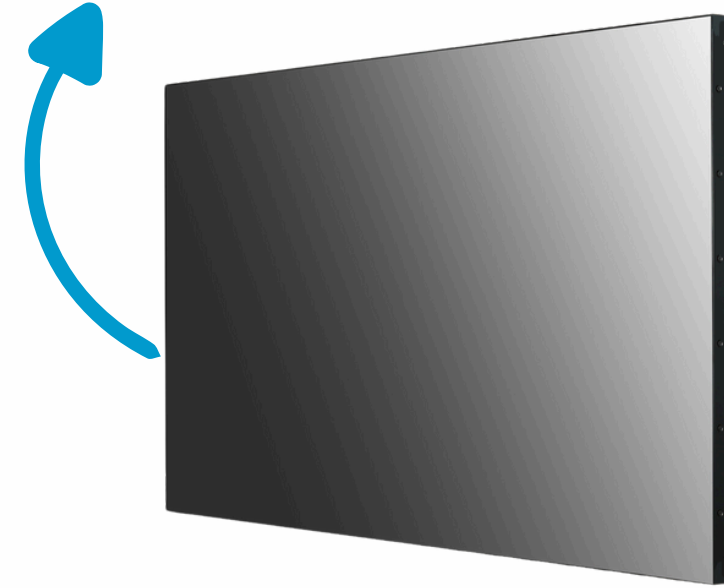


VIDEO WALL

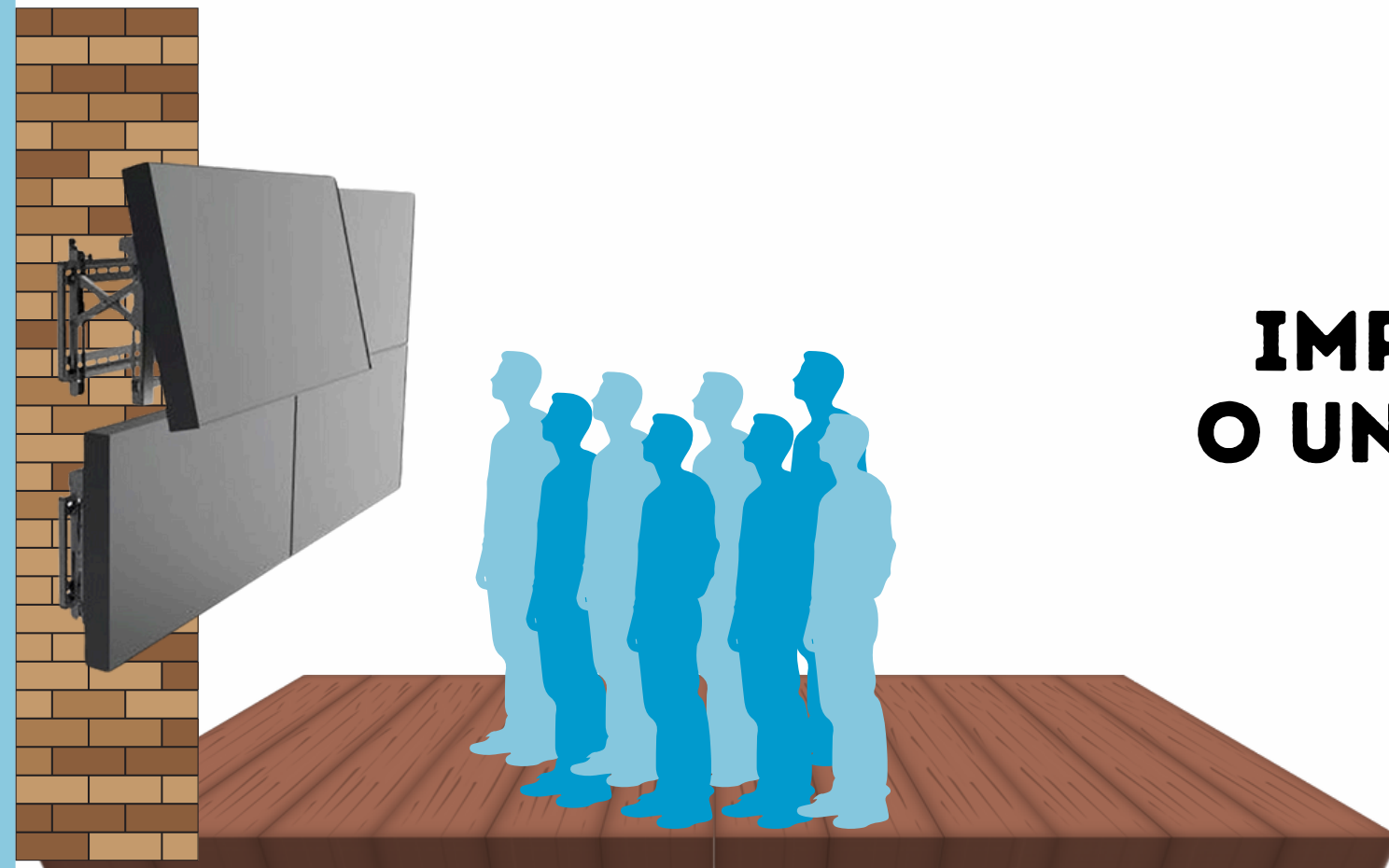
VENTAJAS

- Costos bajos frente a otras tecnologías
- Desmontable
- Facil Mantenimiento
- Bisel de monitores desde 3,5mm
- Brillo agradable a la vista
- Software administrativo
- Rango de Visualizacion de 0,3 m a mas de 3 km a la redonda

FRONTAL



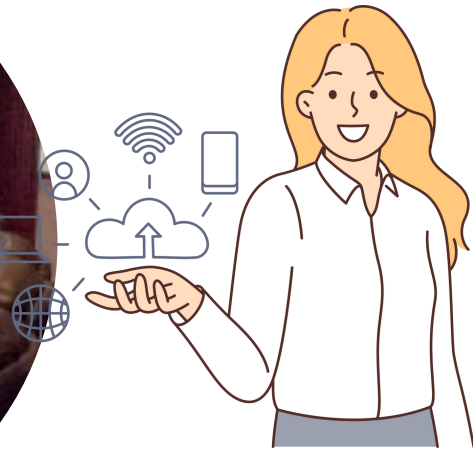
POSTERIOR



**IMPLEMENTACIÓN
O UNIÓN CON OTROS
VIDEO WALL**

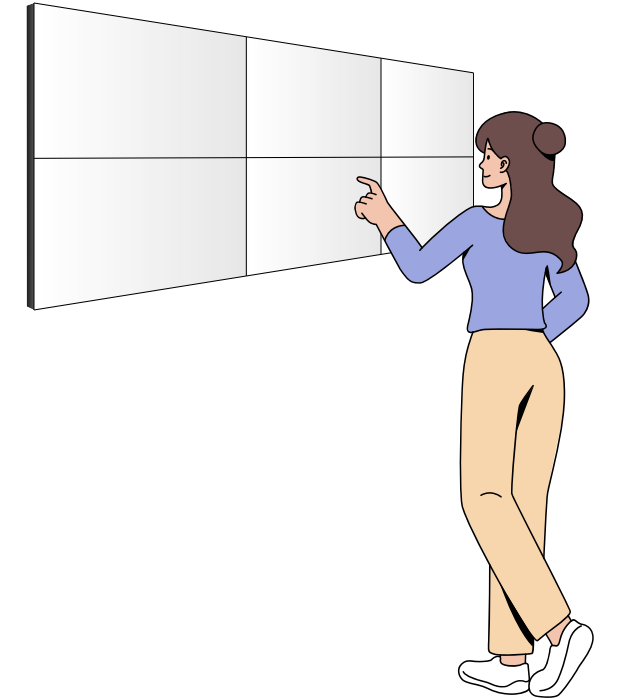


SALA DE CONVENCIONES



SMART TOUCH Latam

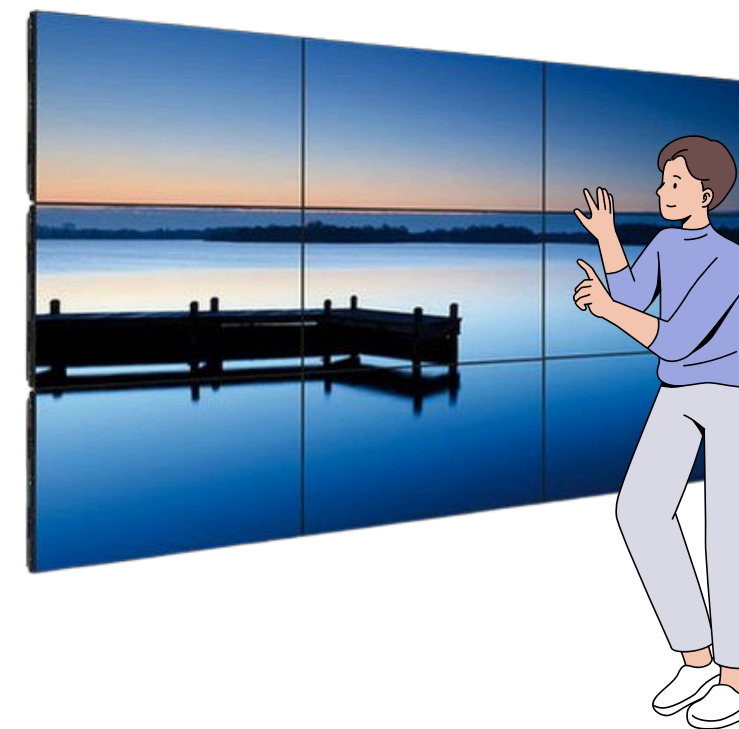
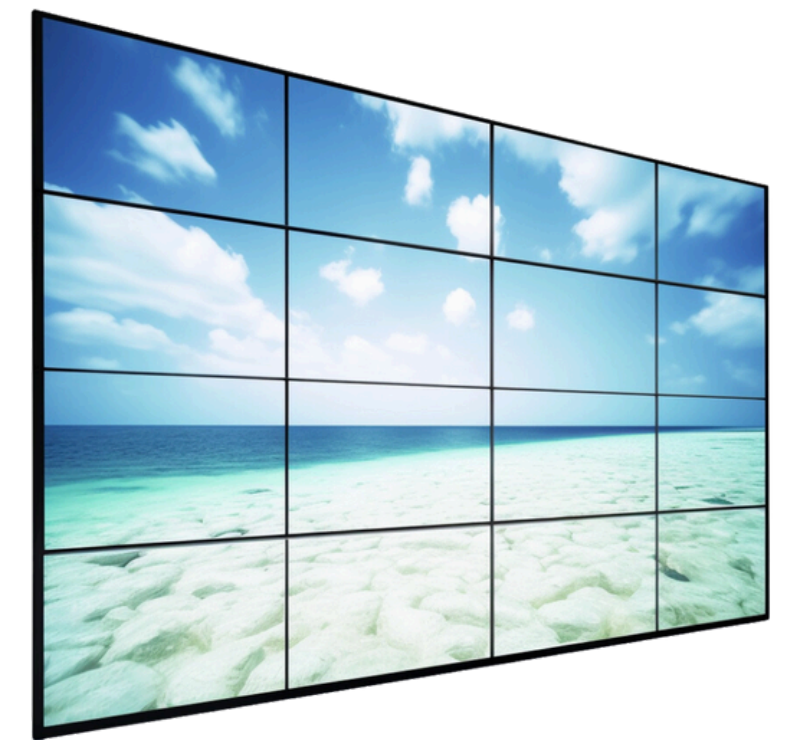
SISTEMA INTERACTIVO



PUBLICIDAD VERTICAL



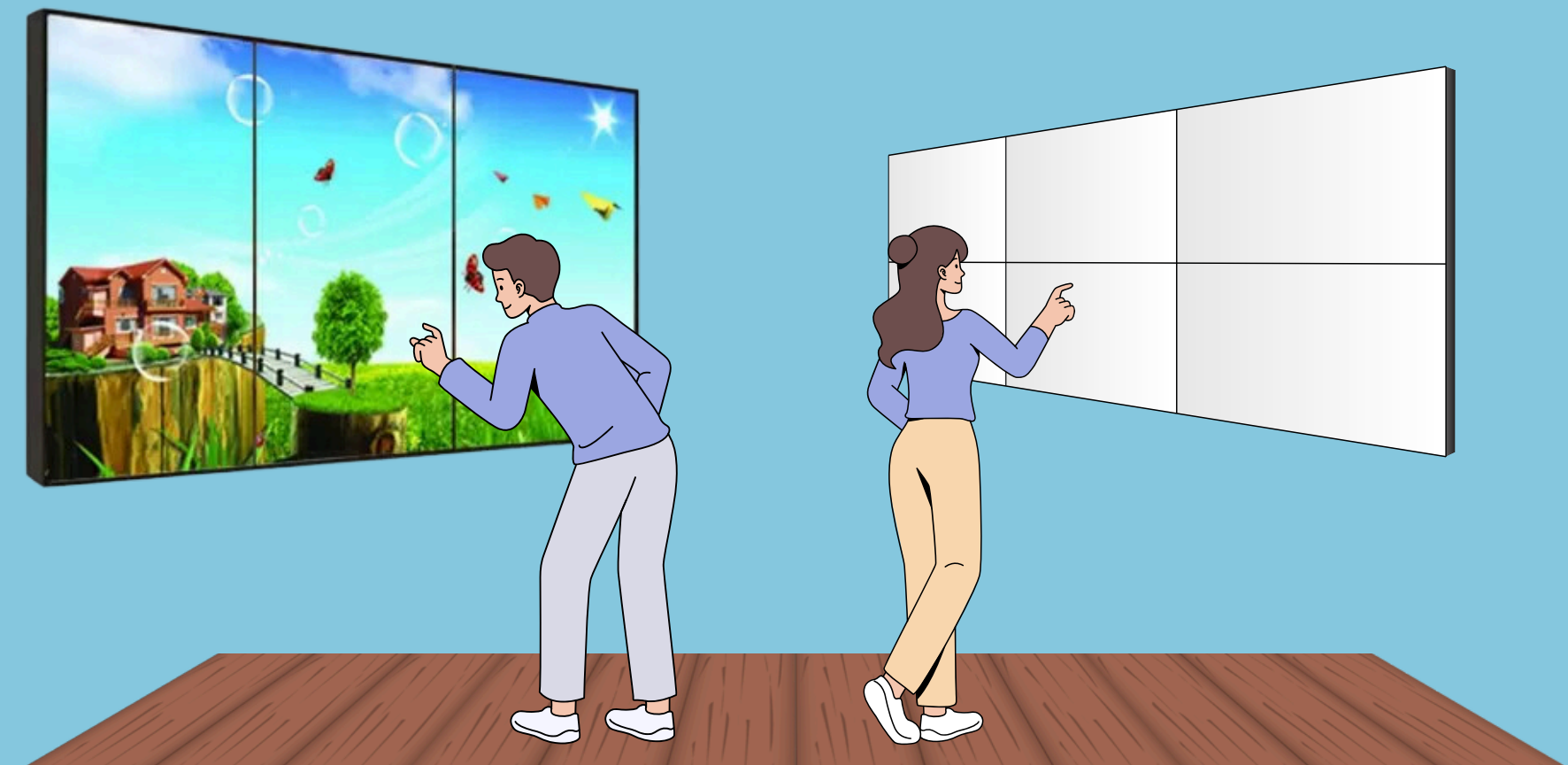
DIVERSIDAD DE USOS



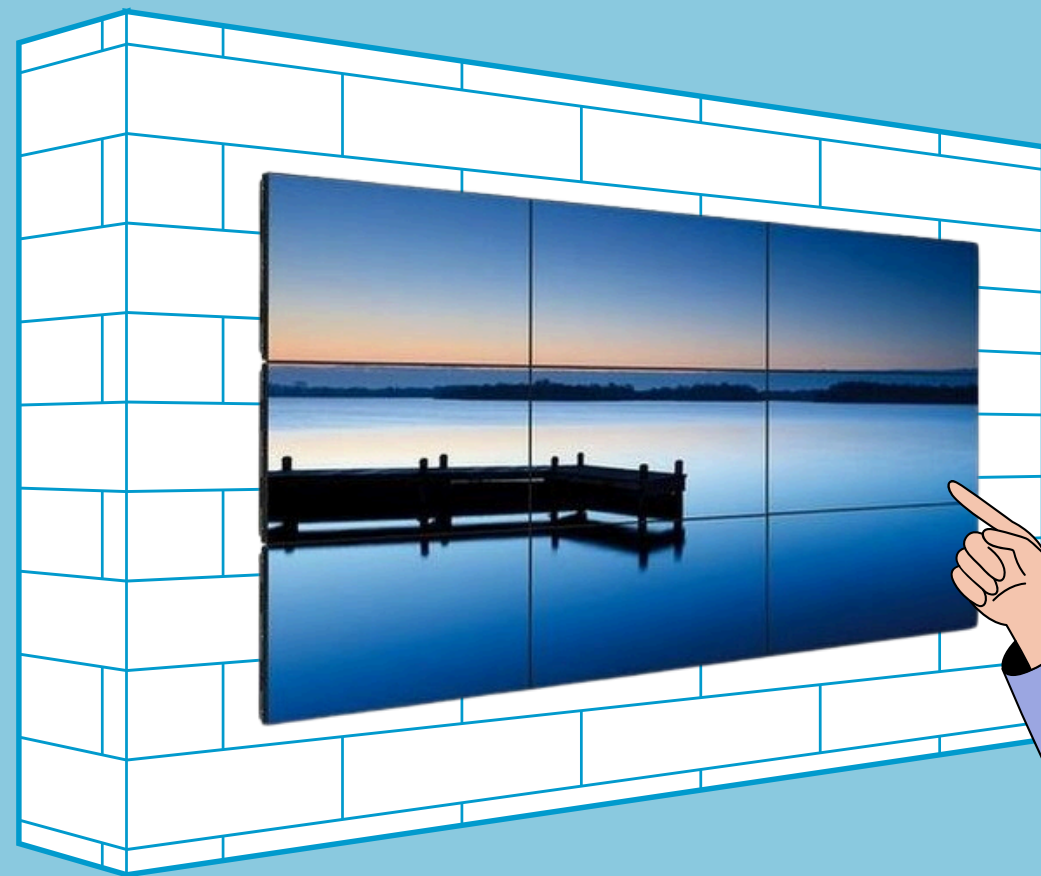
VIDEO WALL

ESPECIFICACIONES TECNICAS

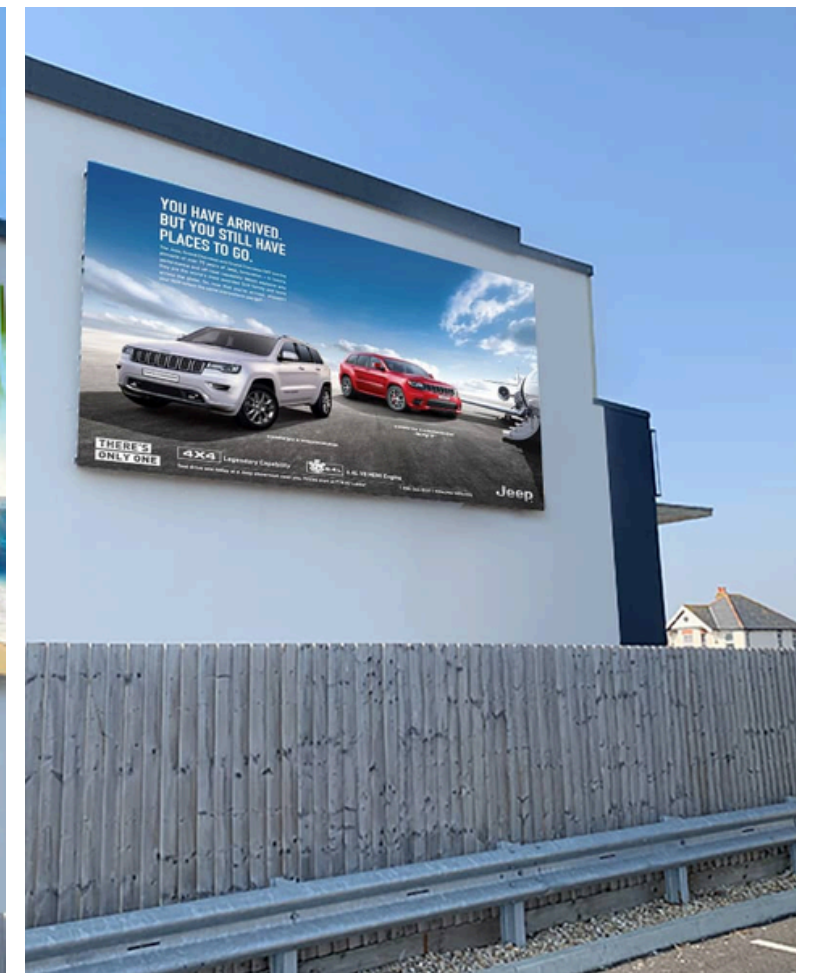
PARAMETROS	measure	49"
	Physical stitching	3.5mm
	Backlight type	LED
	resolution ratio	1920x1080
	Display size (mm)	1074.24 (H)x604.24(V)
	Pixel pitch (mm)	0.55926 mm x 0.55926 mm
	Response time	8ms (typ.)
	Maximum brightness	500cd/m²(typ.)
	contrast	1350:1
	visible angle	178 (vertical, horizontal)
	colour	1.07B/10Bit
	Color saturation (x% NTSC)	72%
	Display scale	16:9
	Refresh frequency	60Hz



VIDEO WALL OUTDOOR



SMART TOUCH Latam



MUCHAS
GRACIAS!!! 😎



SMART TOUCH Latam